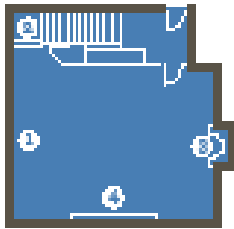




Room	Sq Ft	Dimensions	Conference	U-Shape	Hollow Square	Theatre	Classroom	Reception	Banquet
Salish Ballroom North or South	1015	35x29	20	27	36	90	40	60	60
Salish Ballroom	2100	35x58	n/a	63	60	180	90	160	150
Falls Terrace	900	29x31	24	24	30	50	20	80	60
Potlatch*	924	42x22	15	15	n/a	n/a	n/a	60	60
Falls Terrace + Potlatch	1824	n/a	n/a	n/a	n/a	n/a	n/a	140	120
Falls Terrace + Potlatch +Patio	2624	n/a	n/a	n/a	n/a	n/a	n/a	150	150
Atrium	600	30x20	20	24	30	50	24	40	32
Vintage Room	552	24x23	18	18	24	40	24	40	32
Cliffside Room	368	30x12	18	n/a	n/a	n/a	n/a	18	18
River View Suites	440		8	n/a	n/a	n/a	n/a	18	n/a

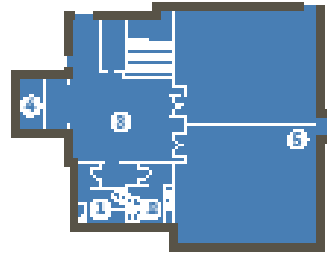
*Not perfectly square

SECOND FLOOR



Vintage Room

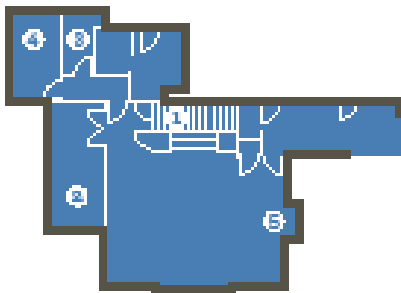
1. White-Board & Pull-Down Screen
2. To Atrium
3. Fireplace
4. Wine Display



Salish Ballroom

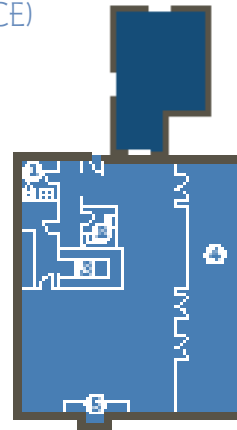
1. Restroom (M)
2. Restroom (W)
3. Ballroom Foyer
4. Elevator
5. Air Wall

THIRD FLOOR (LODGE ENTRANCE)



Potlatch

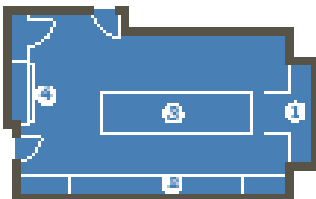
1. Restroom (M)
2. Restroom (W)
3. Fireplace
4. Restroom (W)
5. Fireplace



Falls Terrace

1. Restroom (M)
2. Restroom (W)
3. Built-in Bar
4. Patio Overlooking Snoqualmie River Gorge
5. Fireplace

FOURTH FLOOR



Cliffside Room

1. Balcony Overlooking Falls
2. Built-In White Boards
3. Board Room Table
4. Pull-Down Screen & White Boards