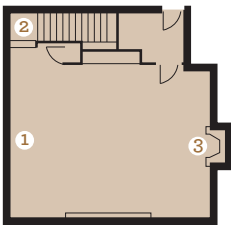


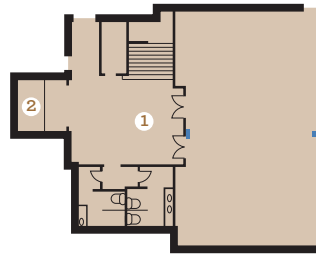
Room	Sq Ft	Dimensions	Conference	U-Shape	Hollow Square	Theatre	Classroom	Buffet Dinner	Plated Dinner
Salish Ballroom	2,052	35x58	40	60	72	180	72	125	125
Falls Terrace	1,000	29x31	24	27	36	84	36	68	64
Potlatch*	924	42x22	24	24	28	-	24	60	60
Falls Terrace + Potlatch	1,924	-	-	-	-	-	-	120	120
Falls Terrace + Potlatch + Patio	2,724	-	-	-	-	-	-	120	120
Atrium	630	30x20	18	24	36	40	24	36	40
Wine Cellar Room	600	24x23	18	24	24	40	24	32	40
Cliffside Room	400	30x12	18	-	-	30	-	18	24
Chef's Studio	200	11x18	12	-	-	-	-	-	12
Hidden Terrace	440	40x11	28	-	-	40	-	28	28



**Wine Cellar Room**

*Second Floor*

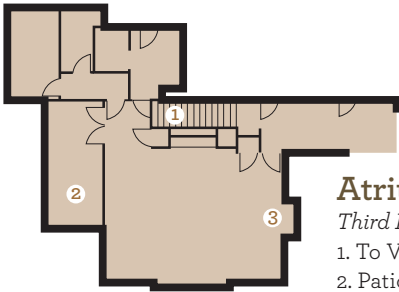
1. White-Board & Pull-Down Screen
2. To Atrium
3. Fireplace



**Salish Ballroom**

*Second Floor*

1. Ballroom Foyer
2. Elevator



**Atrium**

*Third Floor*

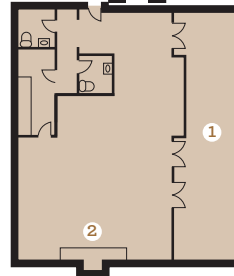
1. To Vintage room
2. Patio
3. Fireplace



**Potlatch**

*Third Floor*

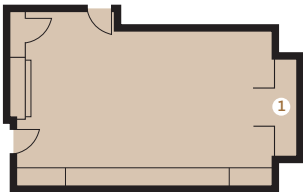
1. Door access to The Dining Room
2. Door access to Falls Terrace



**Falls Terrace**

*Third Floor*

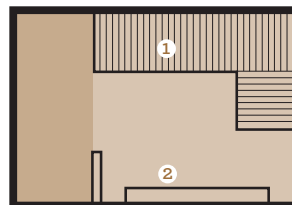
1. Patio Overlooking Snoqualmie River Gorge
2. Fireplace



**Cliffside Room**

*Fourth Floor*

1. Balcony Overlooking Falls



**Chef's Studio**

*First Floor*

1. Stairs to The Dining Room
2. Retractable Glass Doors
3. Patio Overlooking Snoqualmie Falls
4. Salish Garden